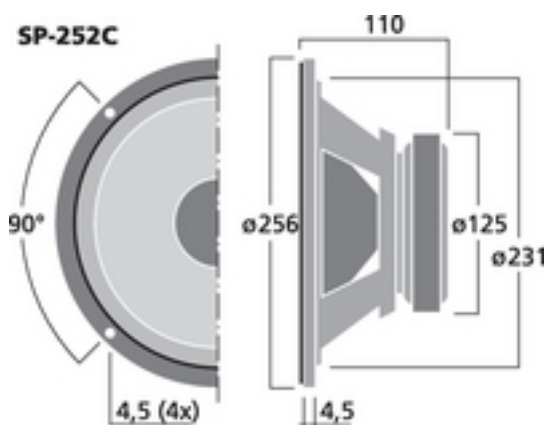
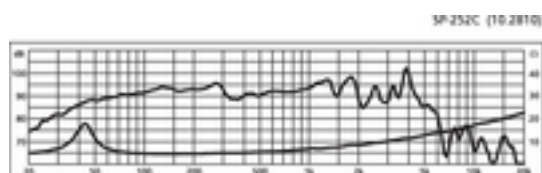
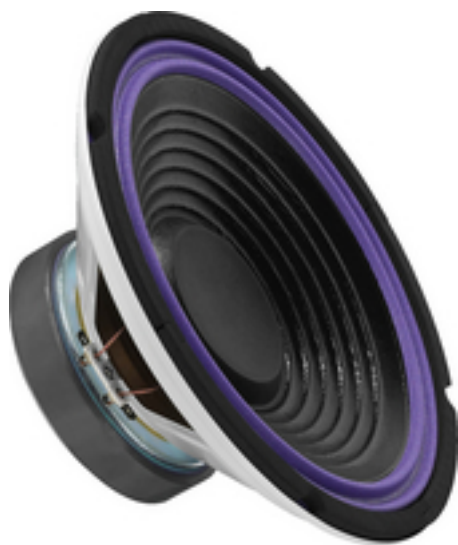


## SP-252C - Car Woofer

200  
W<sub>MAX</sub>

10



Car hi-fi bass speaker, 100 W, 40hm

- 25 cm (10") bass speaker
- Coated cone
- Also suitable as a bass addition for free air applications
- Protruding lower pole plate for a long excursion

## Technical data:

Impedance (Z)	: 4 Ohm
Transmission technology	: -
Frequency range	: f3-3,500 Hz
Resonant frequency (fs)	: 35 Hz
Rec. crossov. frequ. (fmax.) (12 dB/oct.)	: 2,000 Hz
Power rating (RMS)	: 100 W
Peak music power output (MAX)	: 200 W
SPL	: 93 dB/W/m
Max. rated SPL	: -
Max. voltage	: -
Radiation angle	: -
Radiation angle, horizontal	: -
Radiation angle, vertical	: -
Suspension compl. (Cms)	: 0.55 mm/N
Moving mass (Mms)	: 38 g
Mech. Q factor (Qms)	: 3.15
Electr. Q factor (Qes)	: 0.47
Total Q factor (Qts)	: 0.41
Equivalent volume (Vas)	: 96 l
DC resistance (Re)	: 3.7 Ohm
Force factor (BxL)	: 8.08 Tm
Voice coil induct. (Le)	: 0.4 mH
Voice coil diameter	: $\varnothing \sim 39$ mm
Voice coil former	: aluminium
Linear excursion (X <sub>MAX</sub> )	: $\pm 5$ mm
Eff. cone area (Sd)	: 353 cm <sup>2</sup>
Magnet weight	: 850 g
Magnet diameter	: $\varnothing \sim 125$ mm
Mounting cutout	: $\varnothing \sim 231$ mm
Mounting depth	: 110 mm
Mounting hole diameter	: -
Hole spacing X-axis	: -
Hole spacing Y-axis	: -
Dimensions	: $\varnothing \sim 256$ mm x 110 mm
Outside diameter	: $\varnothing \sim 256$ mm

Width	: Å~ 256 mm
Height	: -
Depth	: 110 mm
Colour	: black/violet
Protective class	: -
Admiss. ambient temp.	: 0-40 °C
Weight	: 2.4 kg
Packing unit	: 1
Type of speaker	: 10"
Packing dimensions (W x H x L)	: 0.265 x 0.125 x 0.265 m
Gross weight	: 2.61 kg
Net weight	: 2.4 kg
Low-impedance	: 1