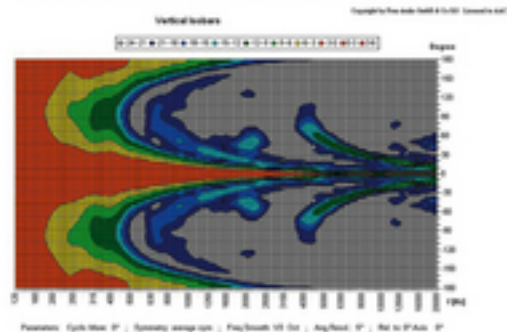
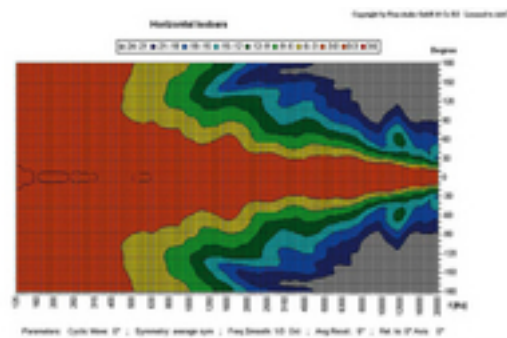
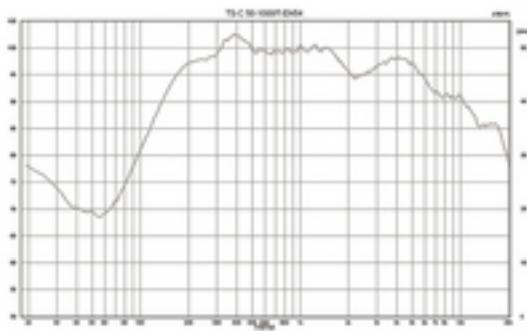


TS-C50-1000/T - PA Speaker Column



Weatherproof PA column speaker,
with EN 54-24 certification.

- 100 V line technique

-
- 8 x 7.7 cm (3") waterproof full range speaker
 - 4 power taps: 50/30/15/7.5 W
 - Connection via ceramic terminals with thermal fuse in the cabinet
 - 2 x PG9 cable gland
 - Robust, plastic-coated aluminium cabinet with front protective grille
 - The speaker complies with British Standard BS 5839, part 8
 - Supplied with plastic wall bracket for pivoting and tilting

Technical data:

Outdoors	: 1
weatherproof	: 1
100 V	: 1
EN 54 certification	: 1
Active/passive	: passive
Transmission technology	: 100 V
Total output power	: -
Power rating (RMS)	: -
Total power rating	: -
Power rating (RMS)	: 50/30/15/7.5 W
Impedance	: -
Frequency range	: 200-20,000 Hz
THD	: -
S/N ratio	: -
Input signal	: -
System	: -
Full range speaker	: 8 x 77 mm
Bass speaker	: -
Midrange speaker	: -
Tweeter	: -
Number of speakers	: 8
Speaker size	: -
SPL	: 100 dB/W/m
Max. rated SPL	: 117 dB
Radiation angle/beam angle	: H173°/V17°
Radiation angle, horizontal	: 173°
Radiation angle, vertical	: 17°
Features	: -
Housing material	: aluminium
Colour	: white aluminium, RAL 9006
Mounting device	: wall bracket
Protected against ball rebound	: -
Protection class	: IP66
Admiss. ambient temp.	: -20 °C to +90 °C
Power supply	: -

Dimensions	: 100 x 971 x 92 mm
Width	: 100 mm
Height	: 971 mm
Depth	: 92 mm
Weight	: 5.1 kg
Inputs	: -
Outputs	: -
Replacement voice coil	: -
Other features	: -
Accessories	: -
Packing dimensions (W x H x L)	: 0.18 x 0.19 x 1.05 m
Gross weight	: 5.83 kg
Net weight	: 5.21 kg