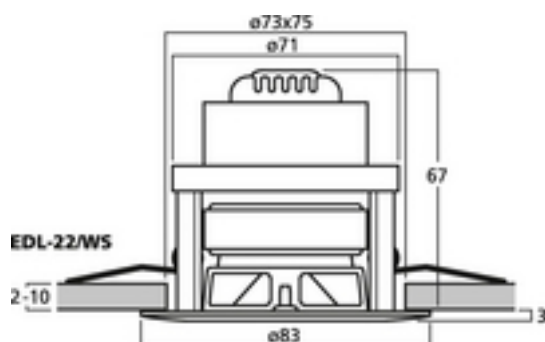
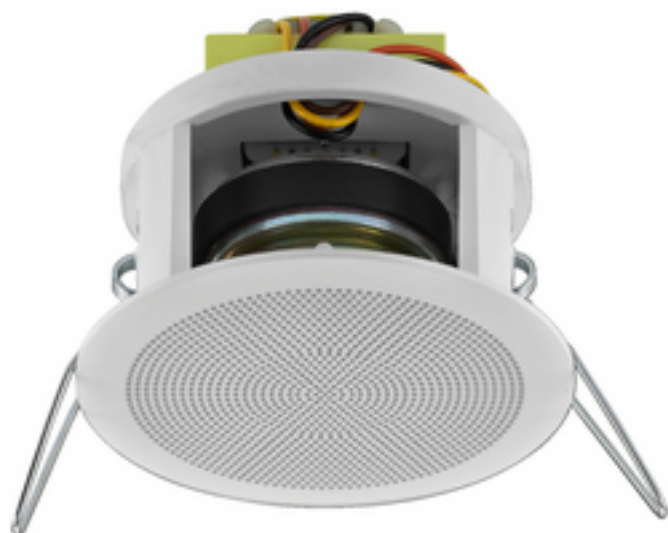


## EDL-22/WS - PA Loudspeaker

100V



**PA loftshøjtaler**, lille og kompakt model, med meget fyldig lyd.

- 100 V line-teknologi
- Hurtig at montere med fjederbeslag
- Hvidt plastikkabinet
- Til lofter med en tykkelse fra 2 til 10 mm

## Technical data:

Impedance (Z)	: -
Transmission technology	: 100 V
Frequency range	: 130-20,000 Hz
Resonant frequency (fs)	: -
Rec. crossov. frequ. (fmax.) (12 dB/oct.)	: -
Power rating (RMS)	: 6/3/1.5 W
Peak music power output (MAX)	: -
SPL	: 85 dB/W/m
Max. rated SPL	: -
Max. voltage	: -
Radiation angle	: -
Radiation angle, horizontal	: -
Radiation angle, vertical	: -
Suspension compl. (Cms)	: -
Moving mass (Mms)	: -
Mech. Q factor (Qms)	: -
Electr. Q factor (Qes)	: -
Total Q factor (Qts)	: -
Equivalent volume (Vas)	: -
DC resistance (Re)	: -
Force factor (BxL)	: -
Voice coil induct. (Le)	: -
Voice coil diameter	: -
Voice coil former	: -
Linear excursion (X <sub>MAX</sub> )	: -
Eff. cone area (Sd)	: -
Magnet weight	: -
Magnet diameter	: -
Mounting cutout	: $\varnothing$ 73 mm
Mounting depth	: 67 mm
Mounting hole diameter	: -
Hole spacing X-axis	: -
Hole spacing Y-axis	: -
Dimensions	: $\varnothing$ 83 mm x 70 mm
Outside diameter	: $\varnothing$ 83 mm

Width	: Å~ 83 mm
Height	: -
Depth	: 70 mm
Colour	: white
Protective class	: -
Admiss. ambient temp.	: -
Weight	: 325 g
Packing unit	: 1
Type of speaker	: 50
Packing dimensions (W x H x L)	: 0.12 x 0.115 x 0.12 m
Gross weight	: 0.41 kg
Net weight	: 0.325 kg