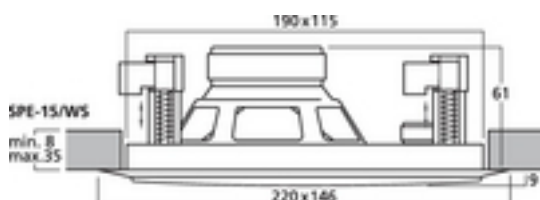
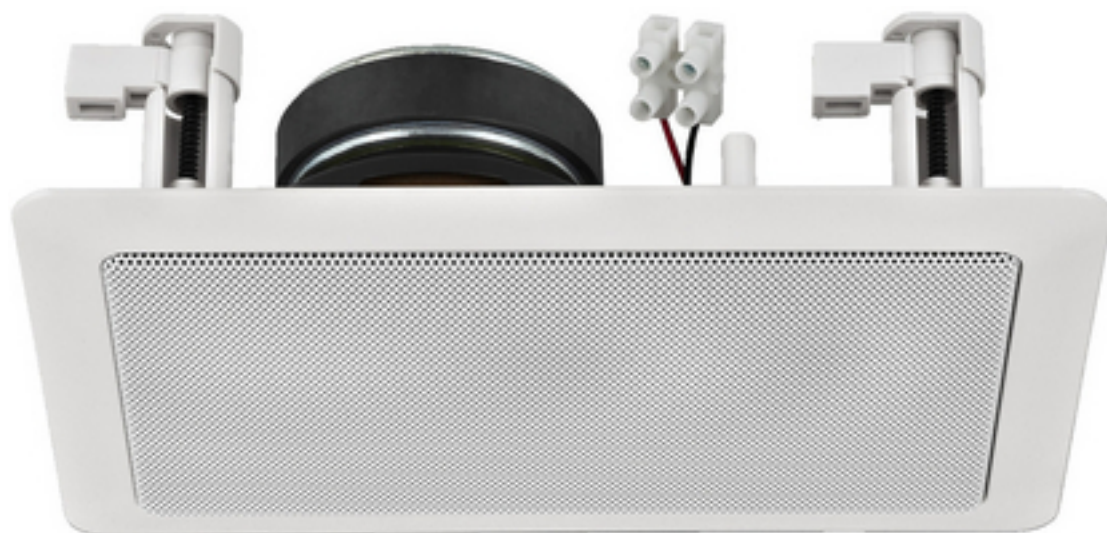


SPE-15/WS - Loudspeaker

8Ω



Hi-Fi væg- og loftshøjttalere, 8 Ohm

- 2-vejs med dome tweeter (justerbar i SPE-17/WS, SPE-22/WS og SPE-32/WS)
- Plastikkabinet med frontgitter i metal
- Udført i ABS-plast; selvslukkende i overensstemmelse med UL 94V-0
- Fremragende lydegenskaber
- Til vægge og lofter med en tykkelse fra 8 til 35 mm

Technical data:

| | |
|---|---------------------|
| Impedance (Z) | : 8 Ohm |
| Transmission technology | : - |
| Frequency range | : 60-20,000 Hz |
| Resonant frequency (fs) | : 90 Hz |
| Rec. crossov. frequ. (fmax.) (12 dB/oct.) | : - |
| Power rating (RMS) | : 25 W |
| Peak music power output (MAX) | : 50 W |
| SPL | : 87 dB/W/m |
| Max. rated SPL | : - |
| Max. voltage | : - |
| Radiation angle | : - |
| Radiation angle, horizontal | : - |
| Radiation angle, vertical | : - |
| Suspension compl. (Cms) | : - |
| Moving mass (Mms) | : - |
| Mech. Q factor (Qms) | : - |
| Electr. Q factor (Qes) | : - |
| Total Q factor (Qts) | : - |
| Equivalent volume (Vas) | : - |
| DC resistance (Re) | : - |
| Force factor (BxL) | : - |
| Voice coil induct. (Le) | : - |
| Voice coil diameter | : - |
| Voice coil former | : - |
| Linear excursion (X _{MAX}) | : - |
| Eff. cone area (Sd) | : - |
| Magnet weight | : - |
| Magnet diameter | : - |
| Mounting cutout | : 115 x 190 mm |
| Mounting depth | : 61 mm |
| Mounting hole diameter | : - |
| Hole spacing X-axis | : - |
| Hole spacing Y-axis | : - |
| Dimensions | : 146 x 220 x 70 mm |
| Outside diameter | : - |



| | |
|--------------------------------|---------------------------|
| Width | : 146 mm |
| Height | : 220 mm |
| Depth | : 70 mm |
| Colour | : white |
| Protective class | : - |
| Admiss. ambient temp. | : 0-40 °C |
| Weight | : 0.83 kg |
| Packing unit | : 1 |
| Type of speaker | : 100 |
| Packing dimensions (W x H x L) | : 0.195 x 0.095 x 0.265 m |
| Gross weight | : 0.989 kg |
| Net weight | : 0.879 kg |
| Low-impedance | : 1 |