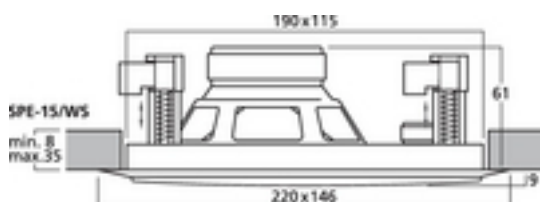
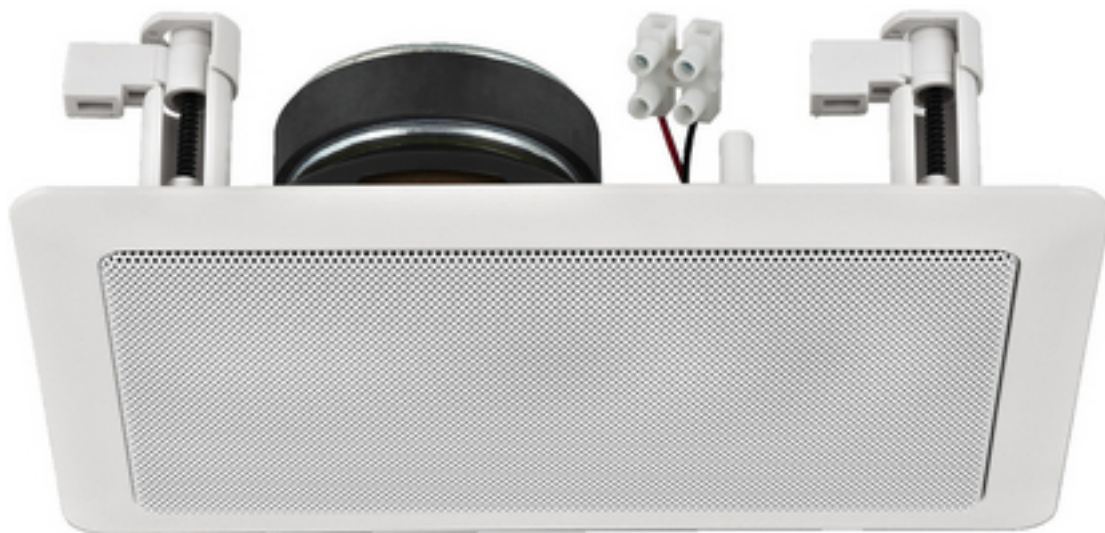


## SPE-15/WS - Loudspeaker

**8Ω**



### Hi-Fi væg- og loftshøjttalere, 8 Ohm

- 2-vejs med dome tweeter (justerbar i SPE-17/WS, SPE-22/WS og SPE-32/WS)
- Plastkabinet med frontgitter i metal
- Udført i ABS-plast; selvslukkende i overensstemmelse med UL 94V-0
- Fremragende lydegenskaber
- Til vægge og lofter med en tykkelse fra 8 til 35 mm

## Technical data:

Impedance (Z)	: 8 Ohm
Transmission technology	: -
Frequency range	: 60-20,000 Hz
Resonant frequency (fs)	: 90 Hz
Rec. crossov. frequ. (fmax.) (12 dB/oct.)	: -
Power rating (RMS)	: 25 W
Peak music power output (MAX)	: 50 W
SPL	: 87 dB/W/m
Max. rated SPL	: -
Max. voltage	: -
Radiation angle	: -
Radiation angle, horizontal	: -
Radiation angle, vertical	: -
Suspension compl. (Cms)	: -
Moving mass (Mms)	: -
Mech. Q factor (Qms)	: -
Electr. Q factor (Qes)	: -
Total Q factor (Qts)	: -
Equivalent volume (Vas)	: -
DC resistance (Re)	: -
Force factor (BxL)	: -
Voice coil induct. (Le)	: -
Voice coil diameter	: -
Voice coil former	: -
Linear excursion (X <sub>MAX</sub> )	: -
Eff. cone area (Sd)	: -
Magnet weight	: -
Magnet diameter	: -
Mounting cutout	: 115 x 190 mm
Mounting depth	: 61 mm
Mounting hole diameter	: -
Hole spacing X-axis	: -
Hole spacing Y-axis	: -
Dimensions	: 146 x 220 x 70 mm
Outside diameter	: -

Width	: 146 mm
Height	: 220 mm
Depth	: 70 mm
Colour	: white
Protective class	: -
Admiss. ambient temp.	: 0-40 °C
Weight	: 0.83 kg
Packing unit	: 1
Type of speaker	: 100
Packing dimensions (W x H x L)	: 0.195 x 0.095 x 0.265 m
Gross weight	: 0.989 kg
Net weight	: 0.879 kg
Low-impedance	: 1