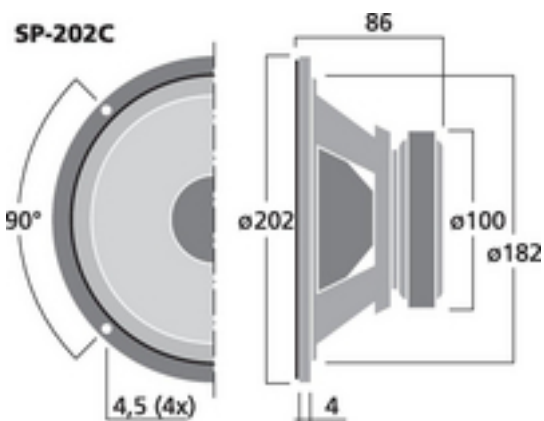
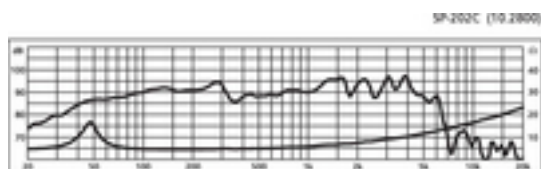
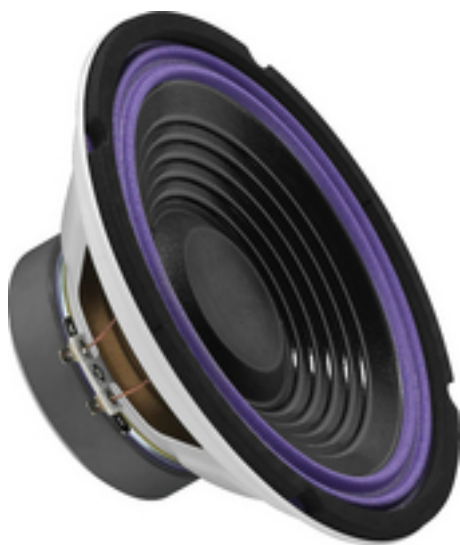


SP-202C - Car Woofer



Car hi-fi bass speaker, 75 W, 4 Ohm

- 20 cm (8") bass speaker
- Coated cone
- Also suitable as a kick bass addition for free air applications
- Protruding lower pole plate for a long excursion

Technical data:

Impedance (Z)	: 4 Ohm
Transmission technology	: -
Frequency range	: f3-4,000 Hz
Resonant frequency (fs)	: 37 Hz
Rec. crossov. frequ. (fmax.) (12 dB/oct.)	: 2,500 Hz
Power rating (RMS)	: 75 W
Peak music power output (MAX)	: 150 W
SPL	: 91 dB/W/m
Max. rated SPL	: -
Max. voltage	: -
Radiation angle	: -
Radiation angle, horizontal	: -
Radiation angle, vertical	: -
Suspension compl. (Cms)	: 0.95 mm/N
Moving mass (Mms)	: 19 g
Mech. Q factor (Qms)	: 3.64
Electr. Q factor (Qes)	: 0.58
Total Q factor (Qts)	: 0.5
Equivalent volume (Vas)	: 61 l
DC resistance (Re)	: 3.8 Ohm
Force factor (BxL)	: 5.51 Tm
Voice coil induct. (Le)	: 0.3 mH
Voice coil diameter	: 25 mm
Voice coil former	: aluminium
Linear excursion (X _{MAX})	: ± 4 mm
Eff. cone area (Sd)	: 214 cm ²
Magnet weight	: 570 g
Magnet diameter	: Å~ 100 mm
Mounting cutout	: Å~ 182 mm
Mounting depth	: 90 mm
Mounting hole diameter	: -
Hole spacing X-axis	: -
Hole spacing Y-axis	: -
Dimensions	: Å~ 202 mm x 86 mm
Outside diameter	: Å~ 202 mm



Width	: Å~ 202 mm
Height	: -
Depth	: 86 mm
Colour	: black/violet
Protective class	: -
Admiss. ambient temp.	: 0-40 °C
Weight	: 1.29 kg
Packing unit	: 1
Type of speaker	: 8"
Packing dimensions (W x H x L)	: 0.21 x 0.1 x 0.21 m
Gross weight	: 1.43 kg
Net weight	: 1.29 kg
Low-impedance	: 1