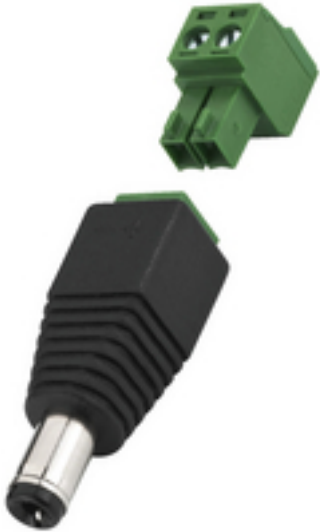


T-521PST - Low Voltage Plug



Low-voltage connector, 5.5/2.1 mm

- For quickly installing e.g. surveillance cameras, LED strips and LED bars
- With plug-in screw terminal and polarity identification

Technical data:

Description	: plug
Type	: low-voltage
Quantity	: 1
Features	: -
Colour/colour coding	: black, chrome
Power rating	: -
Insulating resistance	: -
Dielectric strength	: -
Certification	: -
Pole number	: -
Cable inlet	: -
Suitable cable cross section	: -
Connection	: plug-in screw terminal
Strain relief	: -
Cable bending protection	: -
Stereo	: -
Mono	: -
Switches	: -
Material	: -
Central fixing	: -
Contact type	: -
No. of contacts	: -
Contact width	: -
Contact distance	: -
Admiss. ambient temp.	: 0-40 °C
Dimensions	: -
Diameter	: 5.5/2.1 mm
Length	: -
Weight	: 5.6 g
Other features	: polarity identification