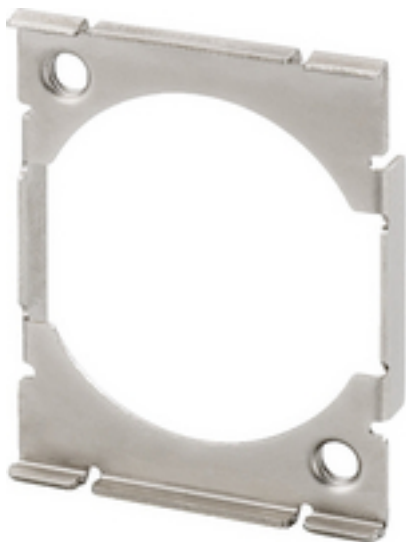


MFD-1 - Mounting Frame



Mounting frame,
with M3 thread.

- Suitable for panel connectors of D series
- For mounting with M3 screws (not supplied)
- Supplied w/o connector

Technical data:

Description	: mounting frame
Nominal value	: -
Type	: D series
Colour	: -
Material	: -
Suitable for	: -
Power supply	: -
Admiss. ambient temp.	: -
Dimensions	: -
Length	: -
Mounting dimensions	: -
Weight	: 2 g
Connections	: -
Other features	: -
Packing unit	: 1
Packing dimensions (W x H x L)	: 0.03 x 0.005 x 0.035 m
Gross weight	: 0.002 kg
Net weight	: 0.002 kg