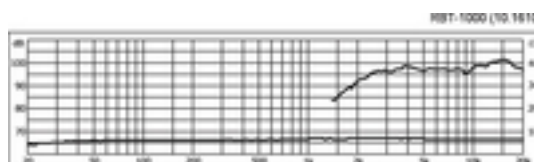
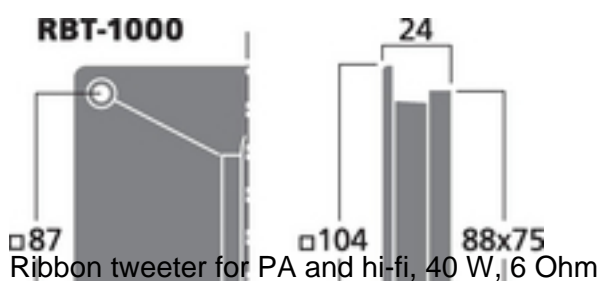
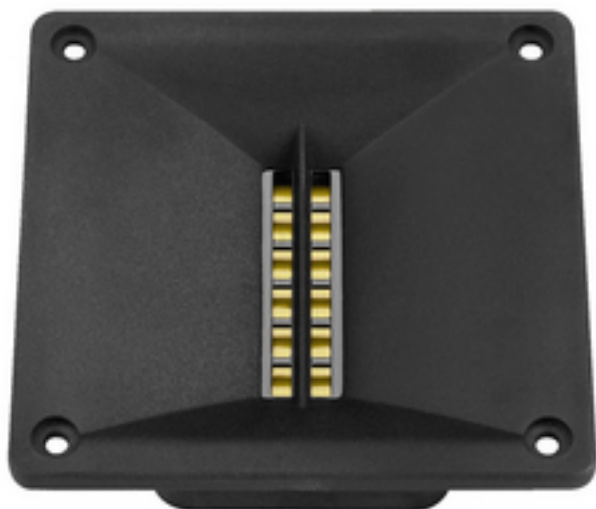


## RBT-1000 - Ribbon Tweeter

**80**  
W<sub>RMS</sub>



- Magnetostatic speaker with waveguide
- Tweeter system from the L-RAY/1000
- Fine and brilliant reproduction of the high frequencies
- For use from 3,000 Hz (hi-fi) or 4,000 Hz (PA) on via 12 dB filter
- Diecast aluminium horn front attachment, neodymium magnet
- Vertical or horizontal mounting possible due to square front panel
- Installation into a sealed airtight housing is recommended

## Technical data:

Impedance (Z)	: 6 Ohm
Transmission technology	: -
Frequency range	: fx-22,000 Hz
Resonant frequency (fs)	: 1.6 kHz
Rec. crossov. frequ. (fmax.) (12 dB/oct.)	: ? 3,000 Hz
Power rating (RMS)	: 40 W
Peak music power output (MAX)	: 80 W
SPL	: 96 dB/W/m
Max. rated SPL	: -
Max. voltage	: -
Radiation angle	: -
Radiation angle, horizontal	: -
Radiation angle, vertical	: -
Suspension compl. (Cms)	: -
Moving mass (Mms)	: -
Mech. Q factor (Qms)	: -
Electr. Q factor (Qes)	: -
Total Q factor (Qts)	: -
Equivalent volume (Vas)	: -
DC resistance (Re)	: 6 Ohm
Force factor (BxL)	: -
Voice coil induct. (Le)	: -
Voice coil diameter	: -
Voice coil former	: -
Linear excursion (X <sub>MAX</sub> )	: -
Eff. cone area (Sd)	: -
Magnet weight	: -
Magnet diameter	: magnetostatic speaker
Mounting cutout	: 89 x 76 mm
Mounting depth	: 24 mm
Mounting hole diameter	: -
Hole spacing X-axis	: 87 mm
Hole spacing Y-axis	: 87 mm
Dimensions	: 104 x 104 x 24 mm
Outside diameter	: -



Width	: 104 mm
Height	: 104 mm
Depth	: 24 mm
Colour	: black
Protective class	: -
Admiss. ambient temp.	: 0-40 °C
Weight	: 0.24 kg
Packing unit	: 1
Type of speaker	: -
Packing dimensions (W x H x L)	: 0.11 x 0.035 x 0.11 m
Gross weight	: 0.263 kg
Net weight	: 0.237 kg
Low-impedance	: 1