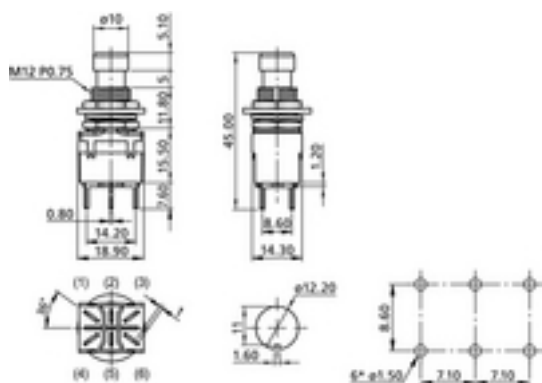
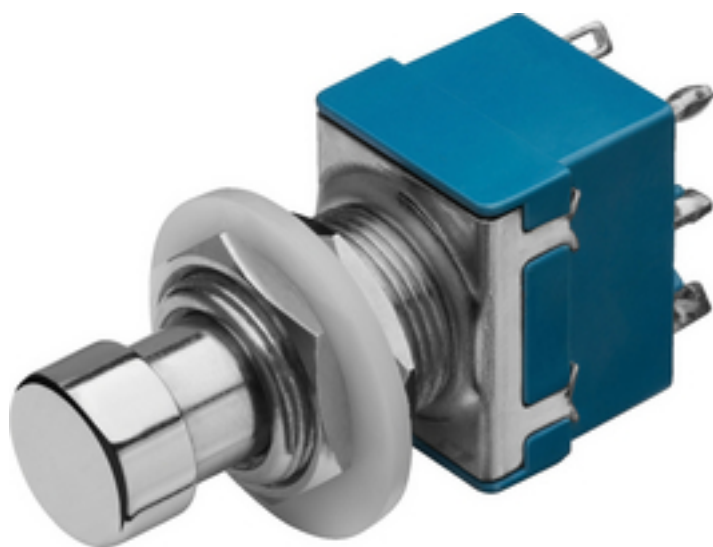


FS-35 - Foot Push Switch

new



Momentary foot switch

- 2 x ON/(ON)
- For hole Ø 12 mm
- For safety extra-low voltage or signal voltage

Technical data:

| | |
|----------------------|--|
| Description | : foot switch |
| Type | : for safety extra-low voltage or signal voltage |
| Wafers | : - |
| Contacts | : - |
| Switching function | : 2 x ON/(ON) |
| Switch positions | : - |
| Power rating | : - |
| PC spacing | : - |
| Colour/colour coding | : - |
| Mounting hole | : \varnothing 12 mm |
| Mounting depth | : - |
| Dimensions | : 14.3 x 45 x 18.9 mm |
| Weight | : 19 g |