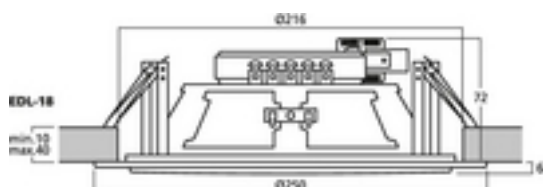
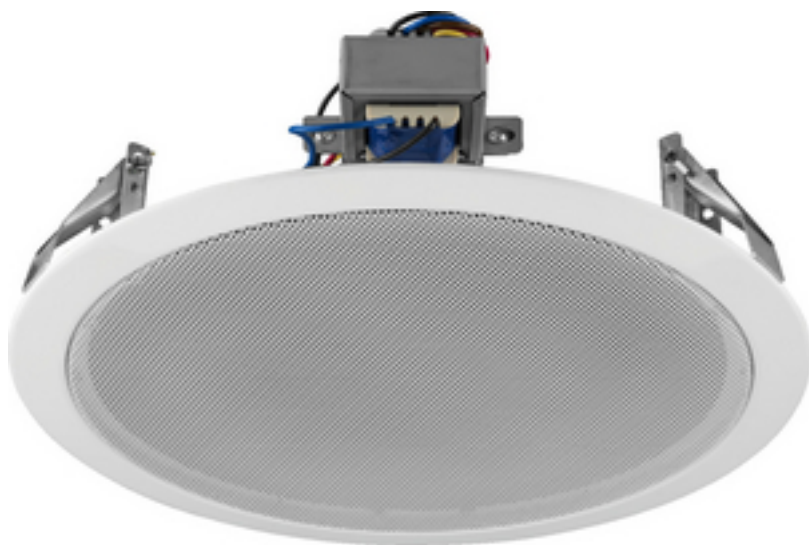


## EDL-18 - PA Loudspeaker

100V



### PA ceiling speaker

- 100 V transmission technology
- 20 cm (8") full range speaker
- Metal housing with protective speaker grille
- Power taps: 10/6/3/1.5 W
- Quick-mounting facility with spring clips
- Connection via spring-loaded terminal
- For a ceiling thickness from 10 to 40 mm

## Technical data:

|   |                                |
|---|--------------------------------|
| Impedance (Z)                             | : -                            |
| Transmission technology                   | : 100 V                        |
| Frequency range                           | : 90-16,000 Hz                 |
| Resonant frequency (fs)                   | : -                            |
| Rec. crossov. frequ. (fmax.) (12 dB/oct.) | : -                            |
| Power rating (RMS)                        | : 10/6/3/1.5 W                 |
| Peak music power output (MAX)             | : -                            |
| SPL                                       | : 94 dB/W/m                    |
| Max. rated SPL                            | : 106 dB                       |
| Max. voltage                              | : -                            |
| Radiation angle                           | : -                            |
| Radiation angle, horizontal               | : -                            |
| Radiation angle, vertical                 | : -                            |
| Suspension compl. (Cms)                   | : -                            |
| Moving mass (Mms)                         | : -                            |
| Mech. Q factor (Qms)                      | : -                            |
| Electr. Q factor (Qes)                    | : -                            |
| Total Q factor (Qts)                      | : -                            |
| Equivalent volume (Vas)                   | : -                            |
| DC resistance (Re)                        | : -                            |
| Force factor (BxL)                        | : -                            |
| Voice coil induct. (Le)                   | : -                            |
| Voice coil diameter                       | : -                            |
| Voice coil former                         | : -                            |
| Linear excursion (X <sub>MAX</sub> )      | : -                            |
| Eff. cone area (Sd)                       | : -                            |
| Magnet weight                             | : -                            |
| Magnet diameter                           | : -                            |
| Mounting cutout                           | : $\varnothing$ 216 mm         |
| Mounting depth                            | : 85 mm                        |
| Mounting hole diameter                    | : -                            |
| Hole spacing X-axis                       | : -                            |
| Hole spacing Y-axis                       | : -                            |
| Dimensions                                | : $\varnothing$ 252 mm x 85 mm |
| Outside diameter                          | : $\varnothing$ 252 mm         |

|                                |                           |
|--------------------------------|---------------------------|
| Width                          | : Å~ 252 mm               |
| Height                         | : -                       |
| Depth                          | : 85 mm                   |
| Colour                         | : white                   |
| Protective class               | : -                       |
| Admiss. ambient temp.          | : 0-40 °C                 |
| Weight                         | : 1.18 kg                 |
| Packing unit                   | : 1                       |
| Type of speaker                | : 200er                   |
| Packing dimensions (W x H x L) | : 0.255 x 0.085 x 0.265 m |
| Gross weight                   | : 1.345 kg                |
| Net weight                     | : 1.183 kg                |
| 100 V                          | : 1                       |